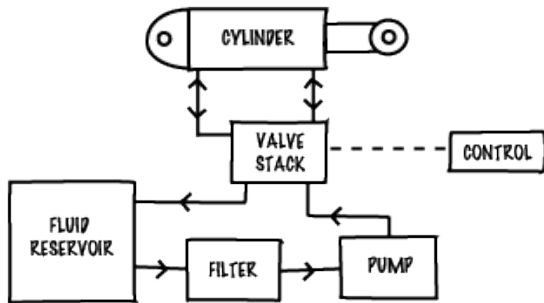


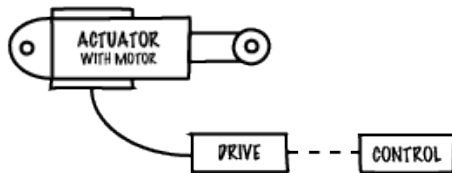
Q: WHY CHOOSE ELECTRO-MECHANICAL ACTUATION?

A: IT'S PRECISE, POWERFUL AND CLEAN.

"SIMPLE" HYDRAULIC CIRCUIT



ELECTRO-MECHANICAL ACTUATION



Installation Savings for the OEM

- Electro-mechanical components cost less than comparable hydraulic component from a full-system perspective.
- An electro-mechanical actuator is easier and quicker to install than multiple hydraulic components.
- System tuning of electro-mechanical systems is quicker and more predictable than configuring hydraulic systems.

Maintenance Savings for the End-User

- Fewer overall components to maintain.
- No hydraulic fluid replacement.
- No leaks to repair.
- Only scheduled bearing lubrication, and periodic inspection of motor/drive cables, as opposed to more complex regular maintenance of hydraulics.

<i>Simplified Installation</i>	Mount, connect cables, operate
<i>Reduced System Footprint</i>	Space and weight reductions
<i>Performance and Programmability</i>	Precise, predictable and repeatable motion
<i>Efficiency</i>	Lower energy consumption
<i>Quieter Operation</i>	No pumps and valves
<i>Safety and Environmental Friendliness</i>	No oil leaks (slip, fire, dermatitis risks); No pressurized hoses
<i>Configurability</i>	Not limited to ram configuration; Options including manual overrides
<i>Reliability</i>	Increased intervals between maintenance; No fluid contamination issues
<i>Low Impact Maintenance</i>	Easy to isolate and repair individual actuators