

Motore M7152 IP54

Motor M7152 IP54

80-165W

Motori C.C. a norme CEI ed IEC - magnete permanente - 2 poli
D.C. motors CEI and IEC standards - permanent magnet - 2 poles

Alimentazione da batteria - tensione nominale 12/24V
Battery supply - rated voltage 12/24V

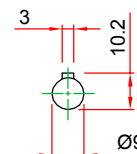
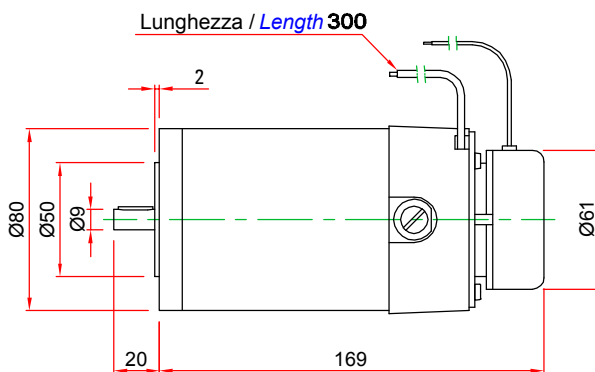
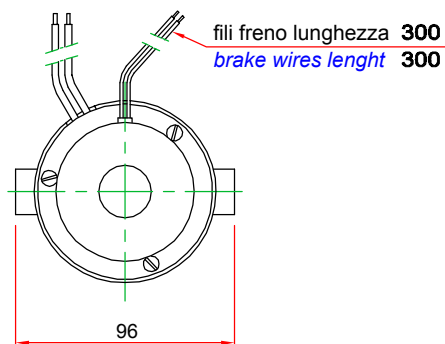
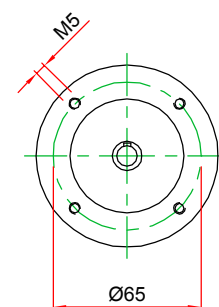
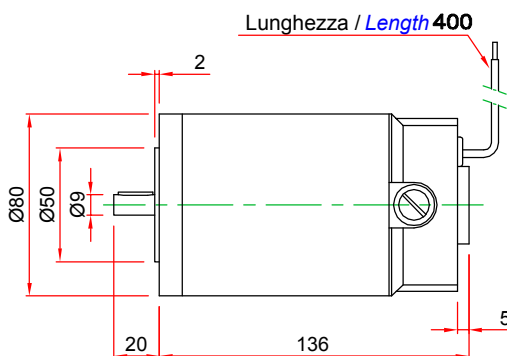
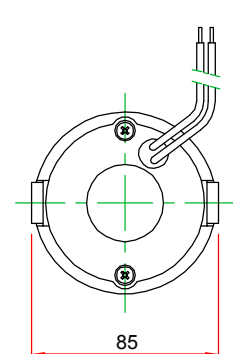
Fattore di forma 1 - servizio intermittente S3 - senza ventilazione
Form factor 1 - intermittent duty S3 - no ventilated

Isolamento classe F - protezione IP54
Insulation F class - protection IP54

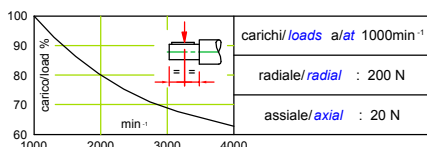
Fili uscenti
Free wires



MOTORE / MOTOR	M7152 (12 V)		M7152 (24 V)
Coppia nominale / <i>Rated torque</i>	0.48 Nm		0.52 Nm
Potenza nominale / <i>Rated power</i>	80 W	150 W	165 W
Velocità nominale / <i>Rated speed</i>	1500 min ⁻¹	3000 min ⁻¹	3000 min ⁻¹
Corrente nominale / <i>Rated current</i>	8.5 A	17 A	8.5 A
Tensione nominale / <i>Rated voltage</i>	12 V		24 V
Velocità a vuoto / <i>No load speed</i>	1800 min ⁻¹	3700 min ⁻¹	3500 min ⁻¹
Peso / <i>Weight</i>	2.2 Kg		2.2 Kg
Servizio / <i>Duty cycle</i>	Intermittente S3 / <i>Intermittent S3</i>		
Tolleranza / <i>Tolerance</i> ±10%			



Con freno 2 Nm / *With brake 2 Nm*



Dati freno / <i>Brake data</i>	
A mancanza di corrente / <i>With lack of current</i>	
Coppia / <i>Torque</i>	2 Nm
Tensione / <i>Voltage</i>	24 V
Potenza / <i>Power</i>	14 W
Corrente / <i>Current</i>	0.6 A
Peso / <i>Weight</i>	0.65 Kg

Motore LN56 IP54

Motor LN56 IP54

85-500W

Motori C.C. a norme CEI ed IEC - magnete permanente - 2 poli
D.C. motors CEI and IEC standards - permanent magnet - 2 poles

Alimentazione da batteria - tensione nominale 12/24/48V
Battery supply - rated voltage 12/24/48V

Fattore di forma 1 - servizio continuo S1 - senza ventilazione
Form factor 1 - continuous duty S1 - no ventilated

Protezione IP54 - isolamento classe F / H
Protection IP54 - insulation F / H class

Scatola morsetti o uscita cavo
Terminal box or free cable

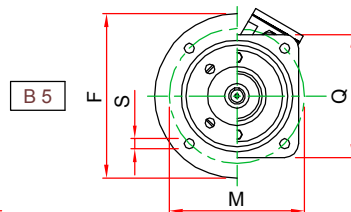
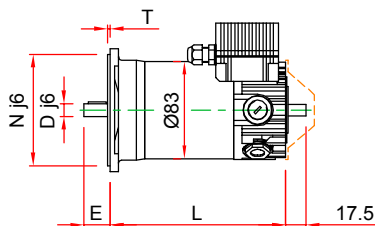
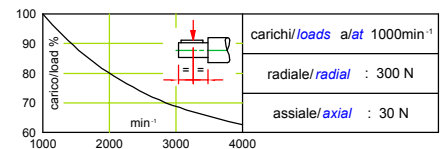
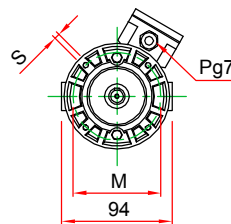
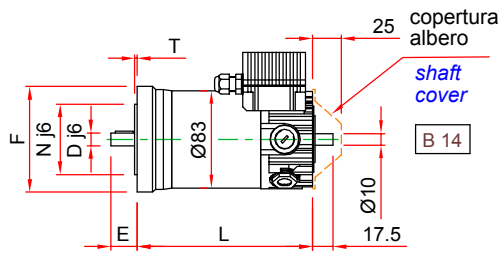


Tipo / Type	1500min ⁻¹			2000min ⁻¹			3000min ⁻¹			
LN56.5	85 W	12 V - 9.1 A	0.53 Nm	110 W	12 V - 11.8 A	0.53 Nm	165 W	12 V - 17.6 A	0.53 Nm	
		24 V - 4.5 A			24 V - 5.9 A			24 V - 8.8 A		
		48 V - 2.7 A			48 V - 2.9 A			48 V - 4.4 A		
LN56.10	165 W	12 V - 17.6 A	1 Nm	200 W	12 V - 22 A	0.95 Nm	200 W	12 V - 22 A	0.64 Nm	
		24 V - 8.8 A		220 W	24 V - 11.8 A		330 W	24 V - 17.6 A		
		48 V - 4.4 A		48 V - 5.9 A	48 V - 8.8 A		1 Nm			
LN56.15	200 W	12 V - 22 A	1.3 Nm	--	--	--	--	--	--	
	250 W	24 V - 13.5 A		330 W	24 V - 17.6 A		400 W	24 V - 22 A		1.3 Nm
		48 V - 6.7 A		48 V - 8.8 A	500 W		48 V - 13.5 A	1.6 Nm		

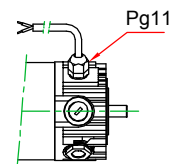
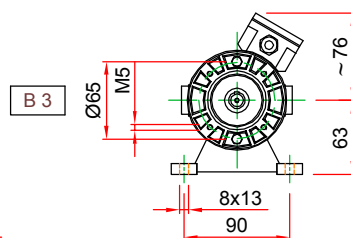
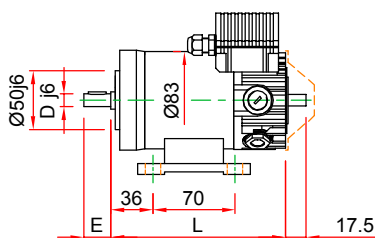
Tolleranza / Tolerance ±10%

Max. 200 W a / at 12 V

Max. 400 W a / at 24 V



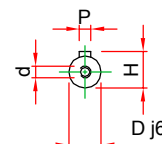
Tipo / Type	L	Peso / Weight
LN56.5	149	2.7 Kg.
LN56.10	196	4.3 Kg.
LN56.15	241	5.6 Kg.



Uscita cavo / Free cable

Flange B14 / Flanges B14				
F	N	M	T	S
Ø80	Ø50	Ø65	2	M5
Ø90	Ø60	Ø75	2	M5
Ø105	Ø70	Ø85	2	M6

Flange B5 / Flanges B5					
F	Q	N	M	T	S
Ø120	90	Ø80	Ø100	3	Ø6.5
--	105	Ø95	Ø115	2.5	Ø9
--	120	Ø110	Ø130	2.5	Ø9



Alberi / Shafts				
D	E	P	H	d
Ø9	20	3x3x12	10.2	M3
Ø11	23	4x4x15	12.5	M4
Ø14	30	5x5x20	16	M5

Motore LV56 IP54

Motor LV56 IP54

100-600W

Motori C.C. a norme CEI ed IEC - magnete permanente - 2 poli
D.C. motors CEI and IEC standards - permanent magnet - 2 poles

Alimentazione da batteria - tensione nominale 12/24/48V
Battery supply - rated voltage 12/24/48V

Fattore di forma 1 - servizio continuo S1 - autoventilato
Form factor 1 - continuous duty S1 - selfventilated

Protezione IP54 - isolamento classe F / H
Protection IP54 - insulation F / H class

Scatola morsetti o uscita cavo
Terminal box or free cable

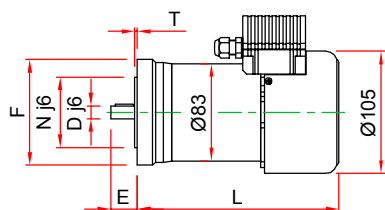


Tipo / Type	1500min ⁻¹			2000min ⁻¹			3000min ⁻¹		
LV56.5	100 W	12 V - 11 A	0.64 Nm	135 W	12 V - 14.5 A	0.64 Nm	200 W	12 V - 22 A	0.64 Nm
		24 V - 5.5 A			24 V - 7.2 A			24 V - 11 A	
		48 V - 2.7 A			48 V - 3.6 A			48 V - 5.5 A	
LV56.10	200 W	12 V - 22 A	1.3 Nm	200 W	12 V - 22 A	0.95 Nm	200 W	12 V - 22 A	0.64 Nm
		24 V - 11 A			24 V - 14.5 A			24 V - 22 A	
		48 V - 5.5 A		48 V - 7.2 A	48 V - 11 A	400 W	1.3 Nm		
LV56.15	200 W	12 V - 22 A	1.3 Nm	--	--	--	--	--	--
	300 W	24 V - 16 A	1.9 Nm	400 W	24 V - 22 A	1.9 Nm	400 W	24 V - 22 A	1.3 Nm
		48 V - 7.5 A			48 V - 11 A		600 W	48 V - 16 A	1.9 Nm

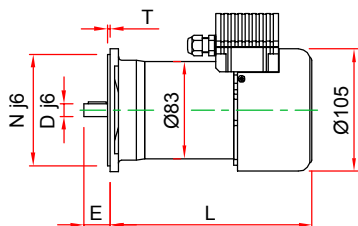
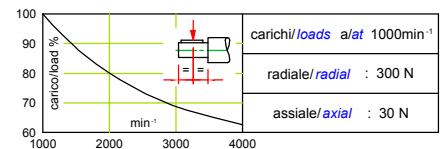
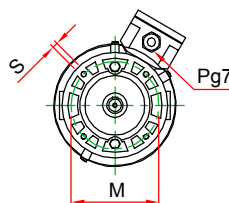
Tolleranza / Tolerance ±10%

Max. 200 W a / at 12 V

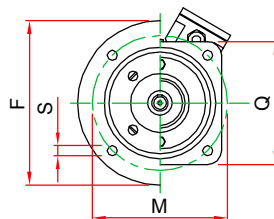
Max. 400 W a / at 24 V



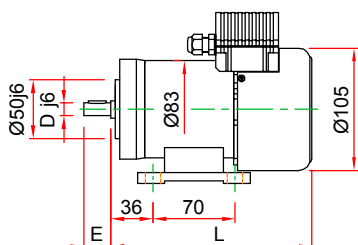
B 14



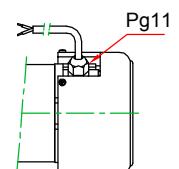
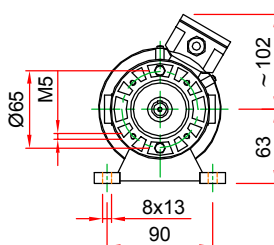
B 5



Tipo / Type	L	Peso / Weight
LV56.5	172	3.2 Kg.
LV56.10	219	4.8 Kg.
LV56.15	264	6.1 Kg.



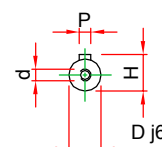
B 3



Uscita cavo / Free cable

Flange B14 / Flanges B14				
F	N	M	T	S
Ø80	Ø50	Ø65	2	M5
Ø90	Ø60	Ø75	2	M5
Ø105	Ø70	Ø85	2	M6

Flange B5 / Flanges B5					
F	Q	N	M	T	S
Ø120	90	Ø80	Ø100	3	Ø6.5
--	105	Ø95	Ø115	2.5	Ø9
--	120	Ø110	Ø130	2.5	Ø9



Alberi / Shafts				
D	E	P	H	d
Ø9	20	3x3x12	10.2	M3
Ø11	23	4x4x15	12.5	M4
Ø14	30	5x5x20	16	M5

Motore LN70 IP54 o IP66

Motor LN70 IP54 or IP66

160-720W

Motori C.C. a norme CEI ed IEC - magnete permanente - 2 o 4 poli
D.C. motors CEI and IEC standards - permanent magnet - 2 or 4 poles

Alimentazione da batteria - tensione nominale 12/24/48V
Battery supply - rated voltage 12/24/48V

Fattore di forma 1 - servizio continuo S1 - senza ventilazione
Form factor 1 - continuous duty S1 - no ventilated

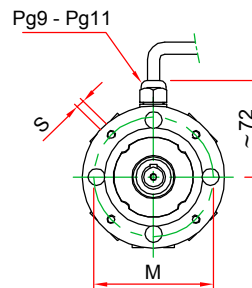
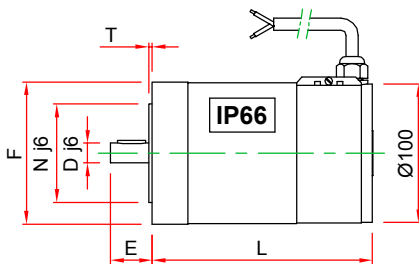
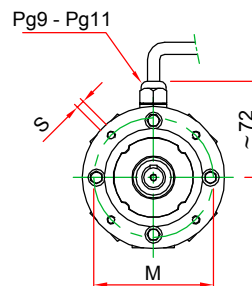
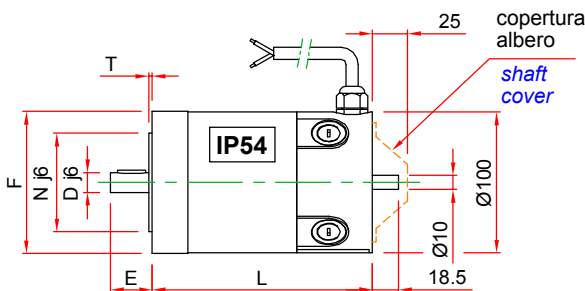
Isolamento classe F / H - protezione IP54 (a richiesta IP66)
Insulation F / H class - protection IP54 (IP66 on request)

Uscita cavo
Free cable

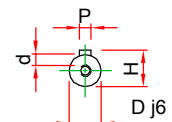


Tipo / Type	1500min ⁻¹				2000min ⁻¹				3000min ⁻¹			
LN70.5	160 W	12 V - 17 A	1 Nm	4	215 W	12 V - 22 A	1 Nm	4	320 W	12 V - 34 A	1 Nm	4
		24 V - 8.5 A		2		24 V - 11 A		2		24 V - 17 A		4
		48 V - 4.2 A		2		48 V - 5.5 A		2		48 V - 8.5 A		2
LN70.10	270 W	12 V - 28 A	1.7 Nm	4	360 W	12 V - 38 A	1.7 Nm	4	380 W	12 V - 40 A	1.2 Nm	4
		24 V - 14 A		4		24 V - 19 A		4		24 V - 28 A		4
		48 V - 7 A		2		48 V - 9.5 A		2		48 V - 14 A		4
LN70.15	380 W	12 V - 40 A	2.4 Nm	4	380 W	12 V - 40 A	1.8 Nm	4	--	--	--	--
		24 V - 20 A		4		24 V - 26 A		4	24 V - 40 A	4		
		48 V - 10 A		2		48 V - 13 A		4	48 V - 20 A	4		

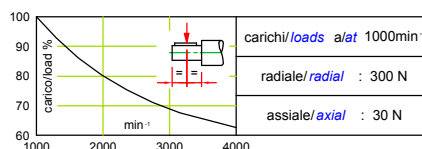
Tolleranza / Tolerance ±10% Max. 380 W a / at 12 V Max. 760 W a / at 24 V



Flange B14 / Flanges B14				
F	N	M	T	S
Ø90	Ø60	Ø75	2	M5
Ø105	Ø70	Ø85	2.5	M6



Tipo / Type	L	Peso / Weight
LN70.5	156.5	4.2 Kg.
LN70.10	206.5	6.2 Kg.
LN70.15	256.5	8.3 Kg.



Alberi / Shafts				
D	E	P	H	d
Ø11	23	4x4x15	12.5	M4
Ø14	30	5x5x20	16	M5

Motore M71_5 IP54 o IP55

Motor M71_5 IP54 or IP55

Motore MV71_5 IP23

Motor MV71_5 IP23

250-500W

Motori C.C. a norme CEI ed IEC - magnete permanente - 2 o 4 poli
D.C. motors CEI and IEC standards - permanent magnet - 2 or 4 poles

Alimentazione da batteria - tensione nominale 12/24/48V - fattore di forma 1
Battery supply - rated voltage 12/24/48V - form factor 1

Tipo M senza ventilazione - servizio intermittente S2/S3 - prot. IP54 - isol. cl. F/H
M type no ventilated - intermittent duty S2/S3 - protection IP54 - insul. F/H class

Tipo MV autoventilato - servizio continuo S1 - prot. IP23 - isol. classe F/H
MV type selfventilated - continuous duty S1 - protection IP23 - insul. F/H class

Tipo M protezione IP55 a richiesta - Fili uscenti
Type M IP55 protection on request - Free wires



Tipo M senza ventilazione - servizio intermittente S2/S3				M type no ventilated - Intermittent duty S2/S3													
Tipo / Type	1500min ⁻¹			2000min ⁻¹			3000min ⁻¹										
M71_5	250 W	12 V - 26 A	1.6 Nm	4	Poli / Poles	340 W	12 V - 36 A	1.6 Nm	4	Poli / Poles	400 W	12 V - 43 A	1.3 Nm	4	Poli / Poles		
		24 V - 12 A					24 V - 17 A					24 V - 25 A				4	2
		48 V - 6 A					48 V - 8 A					48 V - 12 A				2	
Tolleranza / Tolerance ±10%				Max. 400 W a / at 12 V				Tipo / Type 712.5 2 poli / 2 poles									

Tipo MV autoventilato - servizio continuo S1				MV type selfventilated - Continuous duty S1													
Tipo / Type	1500min ⁻¹			2000min ⁻¹			3000min ⁻¹										
MV71_5	250 W	12 V - 26 A	1.6 Nm	4	Poli / Poles	340 W	12 V - 36 A	1.6 Nm	4	Poli / Poles	500 W	12 V - 43 A	1.6 Nm	4	Poli / Poles		
		24 V - 12 A					24 V - 17 A					24 V - 25 A				4	2
		48 V - 6 A					48 V - 8 A					48 V - 12 A				2	
Tolleranza / Tolerance ±10%				Max. 400 W a / at 12 V				Tipo / Type 714.5 4 poli / 4 poles									

Lunghezza / Length 800

Flange B14 / Flanges B14

F	N	M	T	S
Ø90	Ø60	Ø75	2.5	M5
Ø105	Ø70	Ø85	2.5	M6

Flusso aria / Air flow

Tipo MV / MV type Autoventilato / Selfventilated

Flange B5 / Flanges B5

F	N	M	T	S
Ø140	Ø95	Ø115	2.5	Ø9
Ø160	Ø110	Ø130	2.5	Ø9

Peso / Weight

5.7 Kg.

Piedi B3 / Feet B3

h	W	A	B	G
63	40	100	80	Ø7
71	25	112	90	7x12

Alberi / Shafts

D	E	P	H	d
Ø11	23	4x4x15	12.5	M4
Ø14	30	5x5x20	16	M5

carichi/loads a/at 1000min⁻¹

radiale/radial : 300 N

assiale/axial : 30 N

Motore M71_.7 IP54 o IP55

Motor M71_.7 IP54 or IP55

Motore MV71_.7 IP23

Motor MV71_.7 IP23

300-600W

Motori C.C. a norme CEI ed IEC - magnete permanente - 2 o 4 poli
D.C. motors CEI and IEC standards - permanent magnet - 2 or 4 poles

Alimentazione da batteria - tensione nominale 12/24/48V - fattore di forma 1
Battery supply - rated voltage 12/24/48V - form factor 1

Tipo M senza ventilazione - servizio intermittente S2/S3 - prot. IP54 - isol. cl. F/H
M type no ventilated - intermittent duty S2/S3 - protection IP54 - insul. F/H class

Tipo MV autoventilato - servizio continuo S1 - prot. IP23 - isol. classe F/H
MV type selfventilated - continuous duty S1 - protection IP23 - insul. F/H class

Tipo M protezione IP55 a richiesta - Fili uscenti
Type M IP55 protection on request - Free wires



Tipo M senza ventilazione - servizio intermittente S2/S3 *M type no ventilated - Intermittent duty S2/S3*

Tipo / Type	1500min ⁻¹				2000min ⁻¹				3000min ⁻¹			
M71_.7	300 W	12 V - 31 A	1.9 Nm	4	400 W	12 V - 43 A	1.9 Nm	4	--	--	--	-
		24 V - 15 A		4		4		600 W	24 V - 30 A	1.9 Nm	4	
		48 V - 4.5 A		2		2		48 V - 15 A	4			

Tipo MV autoventilato - servizio continuo S1 *MV type selfventilated - Continuous duty S1*

Tipo / Type	1500min ⁻¹				2000min ⁻¹				3000min ⁻¹			
MV71_.7	300 W	12 V - 31 A	1.9 Nm	4	400 W	12 V - 43 A	1.9 Nm	4	--	--	--	-
		24 V - 15 A		4		4		600 W	24 V - 30 A	1.9 Nm	4	
		48 V - 4.5 A		2		2		48 V - 15 A	4			

Tolleranza / *Tolerance* ±10% Max. 400 W a / at 12 V Tipo / *Type* 712.7 2 poli / 2 poles Tipo / *Type* 714.7 4 poli / 4 poles

Lunghezza / Length 800

Flange B14 / Flanges B14

F	N	M	T	S
Ø90	Ø60	Ø75	2.5	M5
Ø105	Ø70	Ø85	2.5	M6

Flange B5 / Flanges B5

F	N	M	T	S
Ø140	Ø95	Ø115	2.5	Ø9
Ø160	Ø110	Ø130	2.5	Ø9

Piedi B3 / Feet B3

h	W	A	B	G
63	40	100	80	Ø7
71	45	112	90	7x12

Flusso aria / Air flow

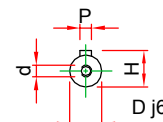
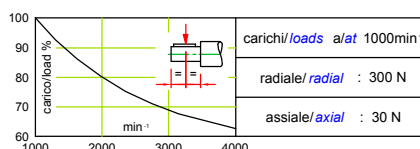
Tipo MV / *MV type*
Autoventilato / *Selfventilated*

Peso / Weight

6.5 Kg.

Alberi / Shafts

D	E	P	H	d
Ø11	23	4x4x15	12.5	M4
Ø14	30	5x5x20	16	M5



Motore M71_9 IP54 o IP55

Motor M71_9 IP54 or IP55

Motore MV71_9 IP23

Motor MV71_9 IP23

400-850W

Motori C.C. a norme CEI ed IEC - magnete permanente - 2 o 4 poli
D.C. motors CEI and IEC standards - permanent magnet - 2 or 4 poles

Alimentazione da batteria - tensione nominale 12/24/48V - fattore di forma 1
Battery supply - rated voltage 12/24/48V - form factor 1

Tipo M senza ventilazione - servizio intermittente S2/S3 - prot. IP54 - isol. cl. F/H
M type no ventilated - intermittent duty S2/S3 - protection IP54 - insul. F/H class

Tipo MV autoventilato - servizio continuo S1 - prot. IP23 - isol. classe F/H
MV type selfventilated - continuous duty S1 - protection IP23 - insul. F/H class

Tipo M protezione IP55 a richiesta - Fili uscenti
Type M IP55 protection on request - Free wires



Tipo M senza ventilazione - servizio intermittente S2/S3					M type no ventilated - Intermittent duty S2/S3									
Tipo / Type	1500min ⁻¹				2000min ⁻¹				3000min ⁻¹					
M71_9	400 W	12 V - 43 A	2.6 Nm	4	--	--	--	-	--	--	--	-		
	450 W	24 V - 23 A	2.9 Nm	4 2	600 W	24 V - 30 A	2.9 Nm	4 4	850 W	24 V - 43 A	2.7 Nm	4 4		
	48 V - 11 A	48 V - 15 A				48 V - 22 A								
Tolleranza / Tolerance ±10%					Max. 400 W a / at 12 V					Tipo / Type 712.9 2 poli / 2 poles				

Tipo MV autoventilato - servizio continuo S1					MV type selfventilated - Continuous duty S1									
Tipo / Type	1500min ⁻¹				2000min ⁻¹				3000min ⁻¹					
MV71_9	400 W	12 V - 43 A	2.6 Nm	4	--	--	--	-	--	--	--	-		
	450 W	24 V - 23 A	2.9 Nm	4 2	600 W	24 V - 30 A	2.9 Nm	4 4	850 W	24 V - 43 A	2.7 Nm	4 4		
	48 V - 11 A	48 V - 15 A				48 V - 22 A								
Tolleranza / Tolerance ±10%					Max. 400 W a / at 12 V					Tipo / Type 714.9 4 poli / 4 poles				

Lunghezza / Length 800

Flange B14 / Flanges B14

F	N	M	T	S
Ø90	Ø60	Ø75	2.5	M5
Ø105	Ø70	Ø85	2.5	M6

Flange B5 / Flanges B5

F	N	M	T	S
Ø140	Ø95	Ø115	2.5	Ø9
Ø160	Ø110	Ø130	2.5	Ø9

Piedi B3 / Feet B3

h	W	A	B	G
63	40	100	80	Ø7
71	45	112	90	7x12

Flusso aria / Air flow

Tipo MV / MV type Autoventilato / Selfventilated

Peso / Weight

8.5 Kg.

Alberi / Shafts

D	E	P	H	d
Ø11	23	4x4x15	12.5	M4
Ø14	30	5x5x20	16	M5

carichi/loads a/at 1000min⁻¹
 radiale/radial : 300 N
 assiale/axial : 30 N

Motore M71_.13 IP54 o IP55

Motor M71_.13 IP54 or IP55

Motore MV71_.13 IP23

Motor MV71_.13 IP23

600-1200W

Motori C.C. a norme CEI ed IEC - magnete permanente - 2 o 4 poli
D.C. motors CEI and IEC standards - permanent magnet - 2 or 4 poles

Alimentazione da batteria - tensione nominale 12/24/48V - fattore di forma 1
Battery supply - rated voltage 12/24/48V - form factor 1

Tipo M senza ventilazione - servizio intermittente S2/S3 - prot. IP54 - isol. cl. F/H
M type no ventilated - intermittent duty S2/S3 - protection IP54 - insul. F/H class

Tipo MV autoventilato - servizio continuo S1 - prot. IP23 - isol. classe F/H
MV type selfventilated - continuous duty S1 - protection IP23 - insul. F/H class

Tipo M protezione IP55 a richiesta - Fili uscenti
Type M IP55 protection on request - Free wires



Tipo M senza ventilazione - servizio intermittente S2/S3					M type no ventilated - Intermittent duty S2/S3							
Tipo / Type	1500min ⁻¹				2000min ⁻¹				3000min ⁻¹			
M71_.13	--	--	--	Poli / Poles	--	--	--	Poli / Poles	--	--	--	Poli / Poles
	600 W	24 V - 30 A	3.8 Nm	4	800 W	24 V - 40 A	3.8 Nm	4	1200 W	48 V - 30 A	3.8 Nm	4
		48 V - 15 A		4		48 V - 20 A		4				4

Tipo MV autoventilato - servizio continuo S1					MV type selfventilated - Continuous duty S1							
Tipo / Type	1500min ⁻¹				2000min ⁻¹				3000min ⁻¹			
MV71_.13	--	--	--	Poli / Poles	--	--	--	Poli / Poles	--	--	--	Poli / Poles
	600 W	24 V - 30 A	3.8 Nm	4	800 W	24 V - 40 A	3.8 Nm	4	1200 W	48 V - 30 A	3.8 Nm	4
		48 V - 15 A		4		48 V - 20 A		4				4

Tolleranza / Tolerance ±10% Max. 400 W a / at 12 V Max. 850 W a / at 24 V Tipo / Type 712.13 2 poli / 2 poles Tipo / Type 714.13 4 poli / 4 poles

Lunghezza / Length 800

Flange B14 / Flanges B14

F	N	M	T	S
Ø90	Ø60	Ø75	2.5	M5
Ø105	Ø70	Ø85	2.5	M6

Flange B5 / Flanges B5

F	N	M	T	S
Ø140	Ø95	Ø115	2.5	Ø9
Ø160	Ø110	Ø130	2.5	Ø9

Piedi B3 / Feet B3

h	W	A	B	G
63	40	100	80	Ø7
71	45	112	90	7x12

Alberi / Shafts

D	E	P	H	d
Ø11	23	4x4x15	12.5	M4
Ø14	30	5x5x20	16	M5

Tipo MV / MV type Autoventilato / Selfventilated

Peso / Weight

8.5 Kg.

carichi/loads a/at 1000min⁻¹
 radiale/radial : 300 N
 assiale/axial : 30 N

Motore N745 IP55 - N746 IP66

Motor N745 IP55 - N746 IP66

0,3-1,3kW

Motori C.C. a norme CEI ed IEC - magnete permanente - 4 poli
D.C. motors CEI and IEC standards - permanent magnet - 4 poles

Alimentazione da batteria - tensione nominale 12/24/48V
Battery supply - rated voltage 12/24/48V

Fattore di forma 1 - servizio continuo S1 - senza ventilazione
Form factor 1 - continuous duty S1 - no ventilated

N745 protezione IP55 - N746 protezione IP66 - isolamento classe F / H
N745 protection IP55 - N746 protection IP66 - insulation F / H class

N745 scatola morsetti o uscita cavo - N746 solo uscita cavo
N745 terminal box or free cable - N746 only free cable

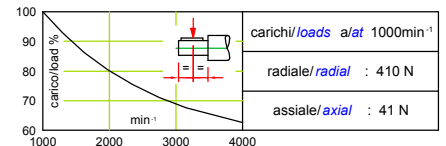
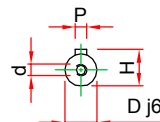
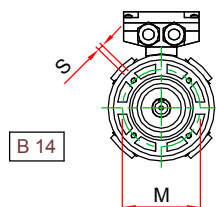
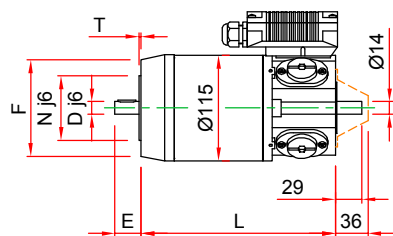


Tipo / Type	1500min ⁻¹			2000min ⁻¹			3000min ⁻¹			
N745.6 N746.6	0,3 kW	12 V - 32 A	2 Nm	0,4 kW	12 V - 43 A	2 Nm	0,55 kW	12 V - 59 A	1,8 Nm	
		24 V - 16 A			24 V - 21,5 A			24 V - 29,5 A		
		48 V - 8 A			48 V - 10,7 A			48 V - 14,7 A		
N745.9 N746.9	0,4 kW	12 V - 43 A	2,7 Nm	0,55 kW	12 V - 59 A	2,7 Nm	0,75 kW	12 V - 80 A	2,4 Nm	
		24 V - 21,5 A			24 V - 29,5 A			24 V - 40 A		
		48 V - 10,7 A			48 V - 14,7 A			48 V - 20 A		
N745.12 N746.12	0,55 kW	12 V - 59 A	3,6 Nm	0,75 kW	12 V - 80 A	3,6 Nm	0,75 kW	12 V - 80 A	2,4 Nm	
		24 V - 29,5 A			24 V - 40 A		1 kW	24 V - 53,5 A		3,2 Nm
		48 V - 14,7 A			48 V - 20 A		48 V - 26,7 A			
N745.18 N746.18	0,75 kW	12 V - 80 A	4,8 Nm	0,75 kW	12 V - 80 A	3,6 Nm	--	--	--	
	0,8 kW	24 V - 43 A	5,1 Nm	1,05 kW	24 V - 56 A	5,1 Nm	1,3 kW	24 V - 70 A	4,2 Nm	
		48 V - 21,5 A			48 V - 28 A			48 V - 34,7 A		

Tolleranza / Tolerance ±10%

Max. 0,75 kW a / at 12 V

Max. 1,3 kW a / at 24 V



Alberi / Shafts

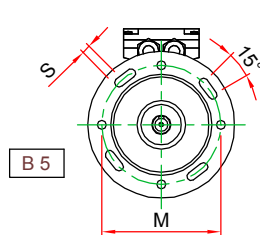
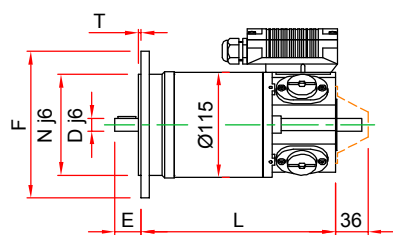
D	E	P	H	d
Ø14	30	5x5x20	16	M5
Ø19	40	6x6x30	21.5	M6

Flange B14 / Flanges B14

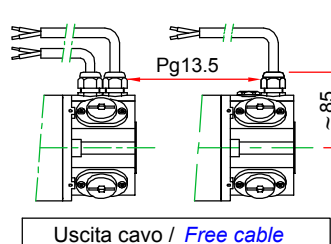
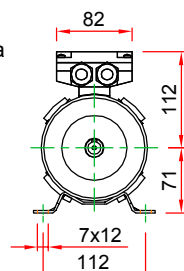
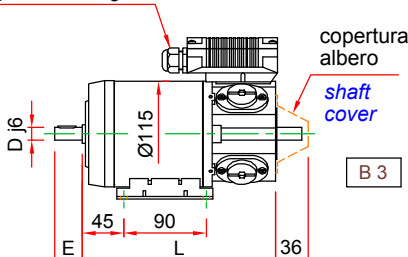
F	N	M	T	S
Ø105	Ø70	Ø85	2.5	M6
Ø120	Ø80	Ø100	2.5	M6

Flange B5 / Flanges B5

F	N	M	T	S
Ø160	Ø110	Ø130	3	Ø9.5
Ø200	Ø130	Ø165	3	Ø11



Pg11 o / or Pg13.5



Tipo / Type	L	Peso / Weight
N745.6 N746.6	214	7.7 Kg.
N745.9 N746.9	247	9.7 Kg.
N745.12 N746.12	277	11.7 Kg.
N745.18 N746.18	337	15.7 Kg.

Motore V745 IP55

Motor V745 IP55

0,4-1,8kW

Motori C.C. a norme CEI ed IEC - magnete permanente - 4 poli
D.C. motors CEI and IEC standards - permanent magnet - 4 poles

Alimentazione da batteria - tensione nominale 12/24/48V
Battery supply - rated voltage 12/24/48V

Fattore di forma 1 - servizio continuo S1 - autoventilato
Form factor 1 - continuous duty S1 - selfventilated

Protezione IP55 - isolamento classe F / H
Protection IP55 - insulation F / H class

Scatola morsetti o uscita cavo
Terminal box or free cable

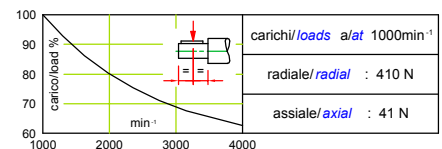
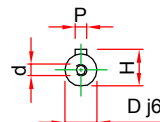
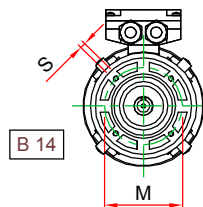
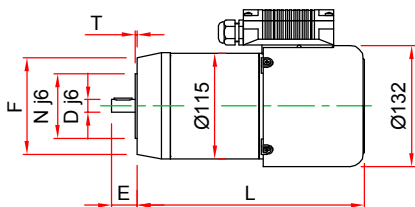


Tipo / Type	1500min ⁻¹			2000min ⁻¹			3000min ⁻¹			
V745.6	0,4 kW	12 V - 40 A	2,6 Nm	0,55 kW	12 V - 58 A	2,6 Nm	0,75 kW	12 V - 80 A	2,3 Nm	
		24 V - 20 A			24 V - 29 A			24 V - 40 A		
		48 V - 10 A			48 V - 14,5 A			48 V - 20 A		
V745.9	0,55 kW	12 V - 58 A	3,5 Nm	0,75 kW	12 V - 80 A	3,5 Nm	0,75 kW	12 V - 80 A	2,3 Nm	
		24 V - 29 A			24 V - 40 A		1 kW	24 V - 53,5 A		3,2 Nm
		48 V - 14,5 A			48 V - 20 A		48 V - 26,5 A			
V745.12	0,75 kW	12 V - 80 A	4,8 Nm	0,75 kW	12 V - 80 A	4,8 Nm	--	--	--	
		24 V - 40 A		1 kW	24 V - 53,5 A		1,3 kW	24 V - 70 A	4,2 Nm	
		48 V - 20 A		48 V - 26,5 A	48 V - 35 A					
V745.18	0,75 kW	12 V - 80 A	4,8 Nm	--	--	--	--	--	--	
	1 kW	24 V - 53,5 A	6,4 Nm	1,3 kW	24 V - 70 A	6,4 Nm	1,5 kW	24 V - 80 A	4,8 Nm	
		48 V - 26,5 A			48 V - 35 A		1,8 kW	48 V - 48 A		5,7 Nm

Tolleranza / Tolerance ±10%

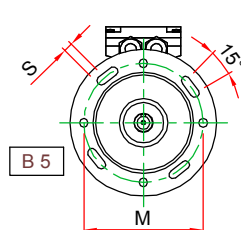
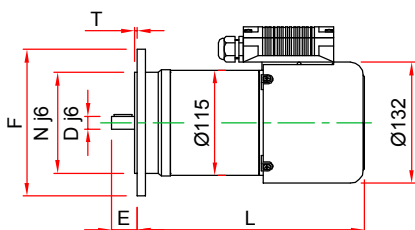
Max. 0,75 kW a / at 12 V

Max. 1,5 kW a / at 24 V



Alberi / Shafts

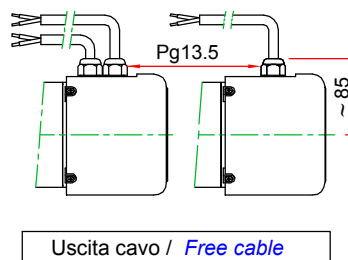
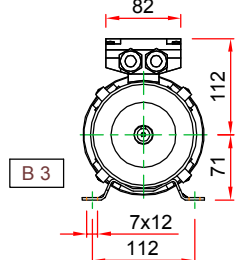
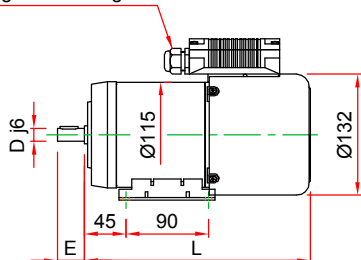
D	E	P	H	d
Ø14	30	5x5x20	16	M5
Ø19	40	6x6x30	21.5	M6



Flange B14 / Flanges B14				
F	N	M	T	S
Ø105	Ø70	Ø85	2.5	M6
Ø120	Ø80	Ø100	2.5	M6

Flange B5 / Flanges B5				
F	N	M	T	S
Ø160	Ø110	Ø130	3	Ø9.5
Ø200	Ø130	Ø165	3	Ø11

Pg11 o / or Pg13.5



Tipo / Type	L	Peso / Weight
V745.6	248	8 Kg.
V745.9	281	10 Kg.
V745.12	311	12 Kg.
V745.18	371	16 Kg.

Motore V88 IP54

Motor V88 IP54

1,1-4,4kW

Motori C.C. a norme CEI ed IEC - magnete permanente - 4 poli
D.C. motors CEI and IEC standards - permanent magnet - 4 poles

Alimentazione da batteria - tensione nominale 12/24/36/48/72/110V
Battery supply - rated voltage 12/24/36/48/72/110V

Fattore di forma 1 - servizio continuo S1 - autoventilato
Form factor 1 - continuous duty S1 - selfventilated

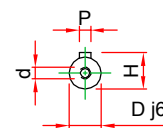
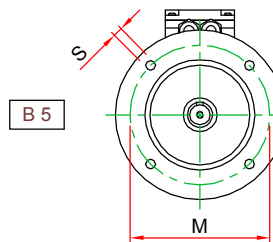
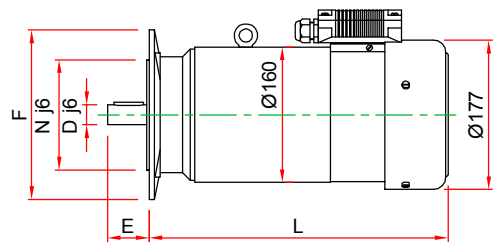
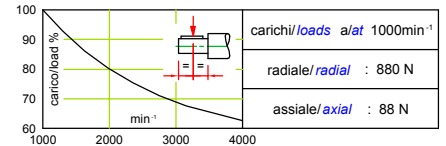
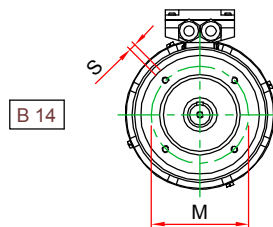
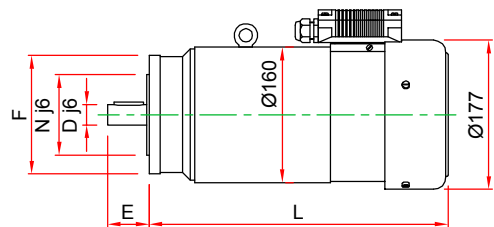
Protezione IP54 - isolamento classe F / H
Protection IP54 - insulation F / H class

Scatola morsetti - a richiesta esecuzione non ventilata
Terminal box - no ventilated execution on request



Tipo Type	Potenza Power	Tensione/Corrente Voltage/Current	Velocità Speed	Coppia Torque	Potenza Power	Tensione/Corrente Voltage/Current	Velocità Speed	Coppia Torque	Potenza Power	Tensione/Corrente Voltage/Current	Velocità Speed	Coppia Torque	
V88.38	1,1 kW	12 V - 110 A	1500 rpm	7 Nm	1,1 kW	12 V - 110 A	2200 rpm	4,8 Nm	--	--	--	--	
	1,2 kW	24 V - 60 A		7,6 Nm	1,5 kW	24 V - 75 A		6,5 Nm	--	--	24 V - 110 A	3000 rpm	7 Nm
		36 V - 40 A		7,6 Nm	2,2 kW	36 V - 50 A		6,5 Nm	--	--	36 V - 74 A	3200 rpm	6,6 Nm
		48 V - 30 A		7,6 Nm	2,2 kW	48 V - 37 A		6,5 Nm	--	--	48 V - 55 A	3000 rpm	7 Nm
V88.57	1,1 kW	12 V - 110 A	1500 rpm	7 Nm	--	--	--	--	--	--	--	--	
	1,7 kW	24 V - 85 A		10,8 Nm	2,2 kW	24 V - 110 A	1950 rpm	10,7 Nm	2,2 kW	24 V - 110 A	3000 rpm	7 Nm	
		36 V - 57 A		10,8 Nm	3,3 kW	36 V - 74 A	2100 rpm	10 Nm	3,3 kW	36 V - 110 A		10,5 Nm	
		48 V - 42 A		10,8 Nm	3,3 kW	48 V - 55 A	1950 rpm	10,7 Nm	3,3 kW	48 V - 83 A		10,5 Nm	
V88.81	1,1 kW	12 V - 110 A	1100 rpm	9,6 Nm	--	--	--	--	--	--	--	--	
	2,2 kW	24 V - 110 A	1500 rpm	14 Nm	2,2 kW	24 V - 110 A	2200 rpm	9,6 Nm	--	--	--	--	
		36 V - 74 A		3 kW	36 V - 100 A	13 Nm		3,3 kW	36 V - 110 A	3400 rpm	9,3 Nm		
		48 V - 55 A		3 kW	48 V - 75 A	13 Nm		4,4 kW	48 V - 110 A	3000 rpm	14 Nm		

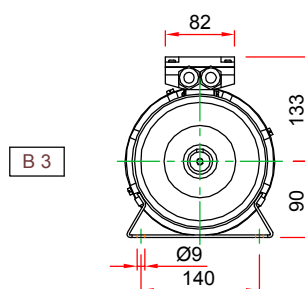
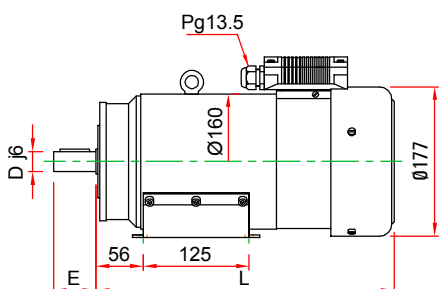
Tolleranza / Tolerance ±10% Max. 1,1 kW a / at 12 V Max. 2,2 kW a / at 24 V Max. 3,3 kW a / at 36 V Max. 4,4 kW a / at 48 V



Alberi / Shafts				
D	E	P	H	d
Ø19	40	6x6x30	21,5	M6
Ø24	50	8x7x35	27	M8

Flange B5 / Flanges B5				
F	N	M	T	S
Ø200	Ø130	Ø165	3	Ø11

Flange B14 / Flanges B14				
F	N	M	T	S
Ø140	Ø95	Ø115	3	M8



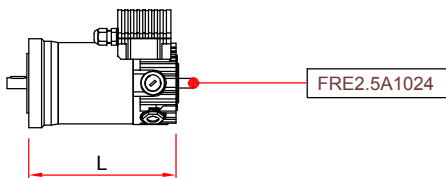
Tipo / Type	L	Peso / Weight
V88.38	354	22 Kg.
V88.57	409	29.6 Kg.
V88.81	464	37.2 Kg.

Assemblaggio accessori per motori c.c. alimentazione da batteria

Accessories assembly for d.c. motors battery supply

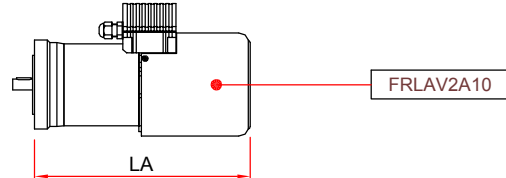
Motore LN56
Motor LN56

Tipo / Type	L
LN56.5	149
LN56.10	196
LN56.15	241



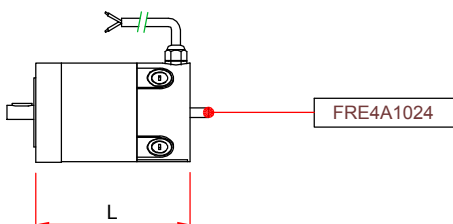
Motore LV56
Motor LV56

Tipo / Type	LA
LV56.5	219
LV56.10	266
LV56.15	311



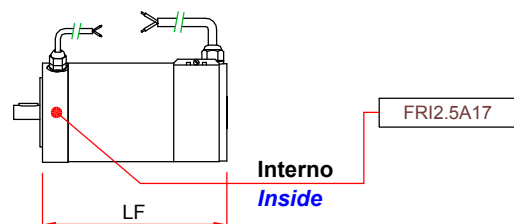
Motore LN70 - IP54
Motor LN70 - IP54

Tipo / Type	L
LN70.5	156.5
LN70.10	206.5
LN70.15	256.5



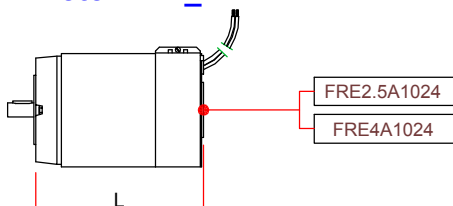
Motore LN70 - IP66
Motor LN70 - IP66

Tipo / Type	LF
LN70.5	187
LN70.10	237
LN70.15	287



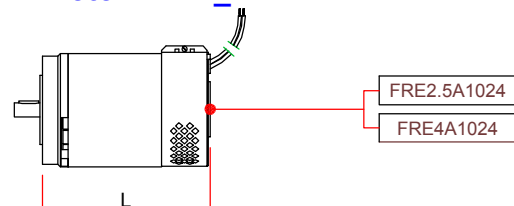
Motore M71_
Motor M71_

Tipo / Type	L
M71_3	156
M71_5	171
M71_7	186
M71_9	218
M71_13	249



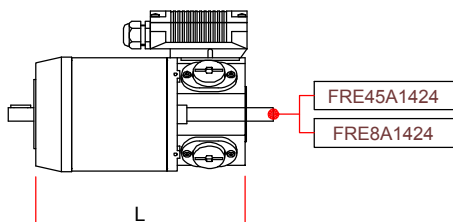
Motore MV71_
Motor MV71_

Tipo / Type	L
MV71_3	156
MV71_5	171
MV71_7	186
MV71_9	218
MV71_13	249



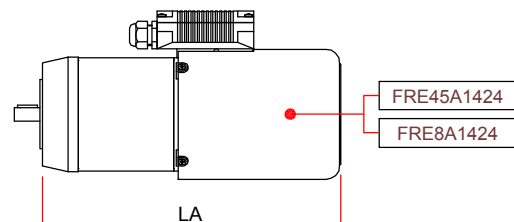
Motore N745
Motor N745

Tipo / Type	L
N745.6	214
N745.9	247
N745.12	277
N745.18	337



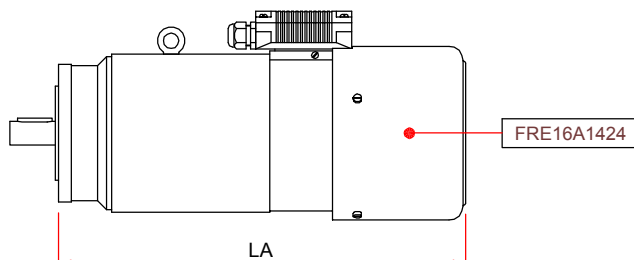
Motore V745
Motor V745

Tipo / Type	LA
V745.6	303
V745.9	336
V745.12	366
V745.18	426



Motore V88
Motor V88

Tipo / Type	LA
V88.38	414
V88.57	469
V88.81	524



Caratteristiche accessori per motori c.c. alimentazione da batteria

Accessories features for d.c. motors battery supply

FRLAV2A10

Freno esterno External brake

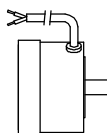
A mancanza di alimentazione
With lack of supply

Coppia 1.7Nm
Torque 1.7Nm

Alimentazione 24Vcc - 12W
Supply 24Vdc - 12W

Peso 0.8Kg
Weight 0.8Kg

Morsettiera motore
Motor terminal box



FRE45A1424

Freno esterno External brake

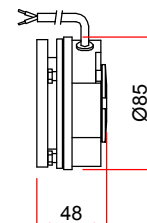
A mancanza di alimentazione
With lack of supply

Coppia 4Nm
Torque 4Nm

Alimentazione 24Vcc - 20W
Supply 24Vdc - 20W

Peso 1.2Kg
Weight 1.2Kg

Morsettiera motore o fili uscenti
Motor terminal box or free wires



FRE2.5A1024

Freno esterno External brake

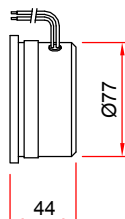
A mancanza di alimentazione
With lack of supply

Coppia 2Nm
Torque 2Nm

Alimentazione 24Vcc - 13W
Supply 24Vdc - 13W

Peso 1.1Kg
Weight 1.1Kg

Morsettiera motore o fili uscenti
Motor terminal box or free wires



FRE8A1424

Freno esterno External brake

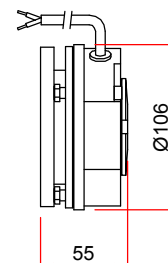
A mancanza di alimentazione
With lack of supply

Coppia 8Nm
Torque 8Nm

Alimentazione 24Vcc - 25W
Supply 24Vdc - 25W

Peso 2Kg
Weight 2Kg

Morsettiera motore o fili uscenti
Motor terminal box or free wires



FRI2.5A17

Freno interno Internal brake

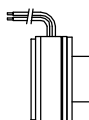
A mancanza di alimentazione
With lack of supply

Coppia 2.5Nm
Torque 2.5Nm

Alimentazione 24Vcc - 13.5W
Supply 24Vdc - 13.5W

Peso 0.9Kg
Weight 0.9Kg

Fili uscenti
Free wires



FRE16A1424

Freno esterno External brake

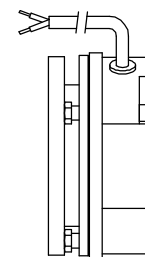
A mancanza di alimentazione
With lack of supply

Coppia 16Nm
Torque 16Nm

Alimentazione 24Vcc - 30W
Supply 24Vdc - 30W

Peso 3.1Kg
Weight 3.1Kg

Morsettiera motore o fili uscenti
Motor terminal box or free wires



FRE4A1024

Freno esterno External brake

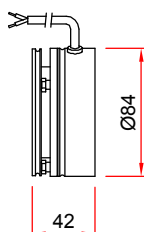
A mancanza di alimentazione
With lack of supply

Coppia 4Nm
Torque 4Nm

Alimentazione 24Vcc - 20W
Supply 24Vdc - 20W

Peso 1.2Kg
Weight 1.2Kg

Fili uscenti
Free wires



A richiesta è disponibile per i tipi FRE45A1424 ,
FRE8A1424 e FRE16A1424 la leva
per lo sbloccaggio manuale.

*On request it is available for the types FRE45A1424 ,
FRE8A1424 and FRE16A1424 the lever for hand release.*

Riduttori epicicloidali e vite senza fine *Planet and worm gears*



Coppia da 5Nm a 250Nm
Torque from 5Nm to 250Nm

PL 45

Riduttore epicycloidale - Coppia da 6Nm a 18Nm

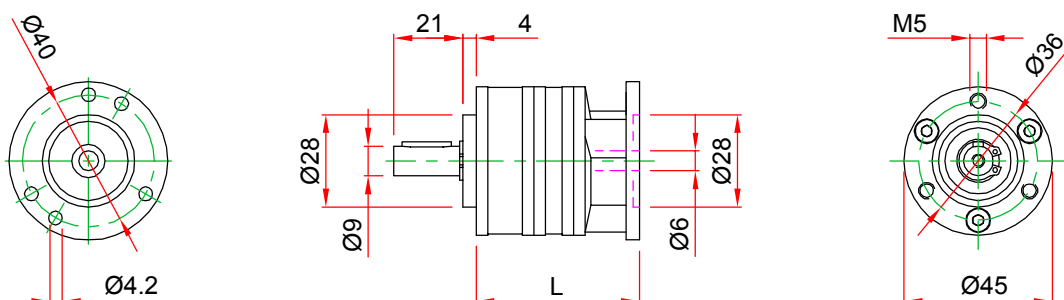
Planet gear - Torque from 6Nm to 18Nm

CARATTERISTICHE PRINCIPALI

- Rapporti interi.
- Rigidità torsionale.
- Capacità di assorbimento ai sovraccarichi
- Bassa inerzia.
- Lubrificazione a grasso.
- Assemblaggio con spina.

MAIN FEATURES

- Whole ratios.
- Torsion stiffness.
- Overload absorption capacity.
- Low inertia.
- Grease lubrication.
- Assembly with pin.



Tipo / Type	Rapporti / Ratios	Coppia nominale / Rated torque	L
PL 45 S	4 - 6	6 Nm	49.5
	16 - 24 - 36	12 Nm	61.5
	64 - 96 - 144 - 216	18 Nm	73.5



OPZIONI :

- Flange e alberi speciali

OPTIONS :

- Special shafts and flanges

PL 52

Riduttore epicicloidale - Coppia da 10Nm a 30Nm

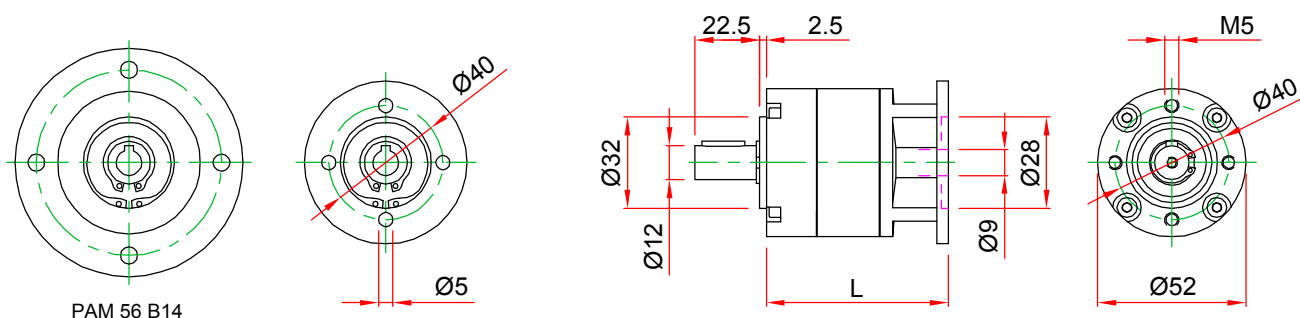
Planet gear - Torque from 10Nm to 30Nm

CARATTERISTICHE PRINCIPALI

- Rapporti interi.
- Rigidità torsionale.
- Capacità di assorbimento ai sovraccarichi
- Bassa inerzia.
- Lubrificazione a grasso.
- Assemblaggio con chiavetta.

MAIN FEATURES

- Whole ratios.
- Torsion stiffness.
- Overload absorption capacity.
- Low inertia.
- Grease lubrication.
- Assembly with keynut.



Tipo / Type	Rapporti / Ratios	Coppia nominale / Rated torque	L
PL 52 C	4 - 6	10 Nm	64
	16 - 24 - 36	20 Nm	80.5
	64 - 96 - 144 - 216	30 Nm	97

OPZIONI :

- Flange e alberi speciali

OPTIONS :

- Special shafts and flanges



PL 60

Riduttore epicicloidale - Coppia da 12Nm a 40Nm

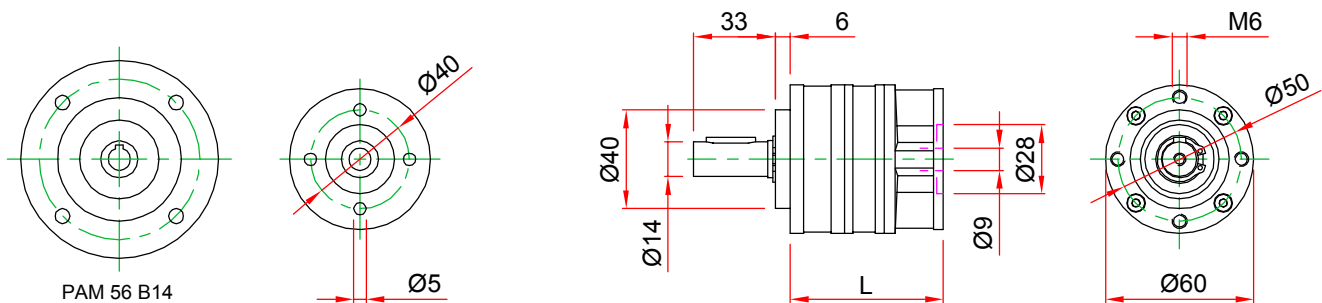
Planet gear - Torque from 12Nm to 40Nm

CARATTERISTICHE PRINCIPALI

- Rapporti interi.
- Rigidità torsionale.
- Capacità di assorbimento ai sovraccarichi
- Bassa inerzia.
- Lubrificazione a grasso.
- Assemblaggio con spina (PL60S).
- Assemblaggio con chiavetta (PL60C).

MAIN FEATURES

- Whole ratios.
- Torsion stiffness.
- Overload absorption capacity.
- Low inertia.
- Grease lubrication.
- Assemblage with pin (PL60S).
- Assembly with keynut (PL60C).



Tipo / Type	Rapporti / Ratios	Coppia nominale / Rated torque	L
PL 60 S	4 - 6	12 Nm	62
PL 60 C	16 - 24 - 36	26 Nm	78
	64 - 96 - 144 - 216	40 Nm	94



OPZIONI :

- Flange e alberi speciali

OPTIONS :

- Special shafts and flanges

PL 80

Riduttore epicicloidale - Coppia da 25Nm a 80Nm

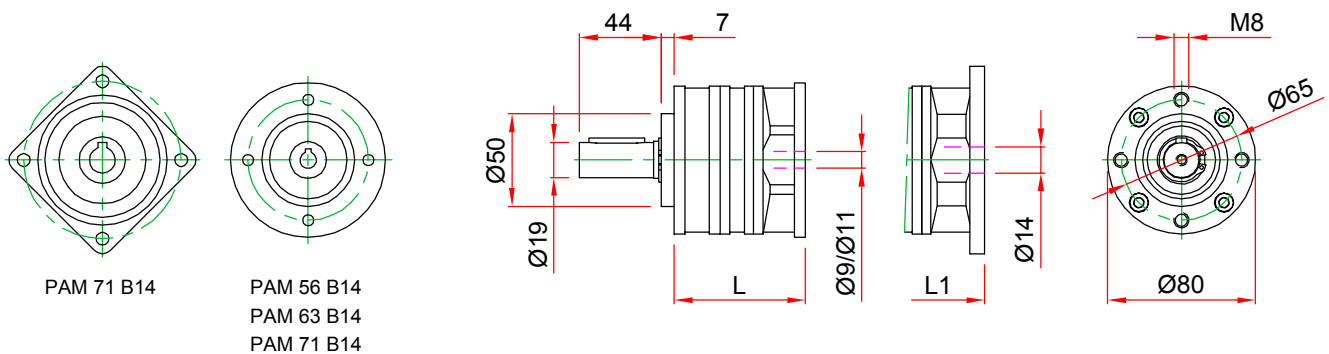
Planet gear - Torque from 25Nm to 80Nm

CARATTERISTICHE PRINCIPALI

- Rapporti interi.
- Rigidità torsionale.
- Capacità di assorbimento ai sovraccarichi
- Bassa inerzia.
- Lubrificazione a grasso.
- Assemblaggio con chiavetta.

MAIN FEATURES

- Whole ratios.
- Torsion stiffness.
- Overload absorption capacity.
- Low inertia.
- Grease lubrication.
- Assembly with keynut.



Tipo / Type	Rapporti / Ratios	Coppia nominale / Rated torque	L	L1
PL 80 C	4 - 6	25 Nm	71	77
	16 - 24 - 36	50 Nm	89	95
	64 - 96 - 144 - 216	80 Nm	107	113



OPZIONI :

- Flange e alberi speciali

OPTIONS :

- Special shafts and flanges

PL 115

Riduttore epicicloidale - Coppia da 70Nm a 250Nm

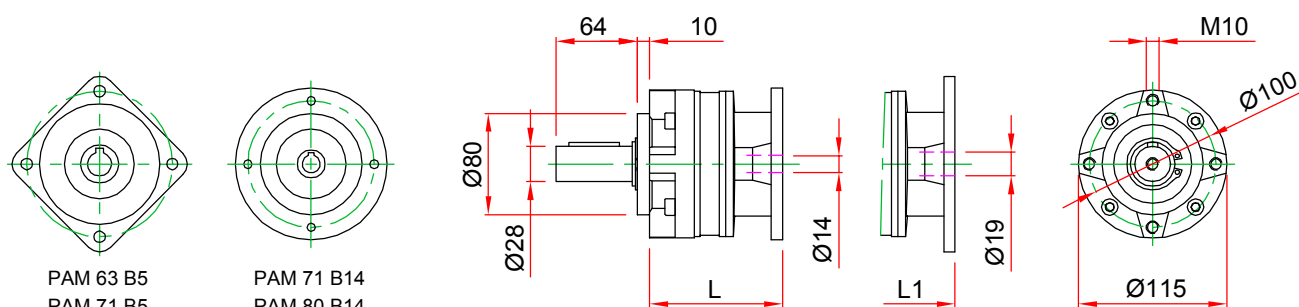
Planet gear - Torque from 70Nm to 250Nm

CARATTERISTICHE PRINCIPALI

- Rapporti interi.
- Rigidità torsionale.
- Capacità di assorbimento ai sovraccarichi
- Bassa inerzia.
- Lubrificazione a grasso.
- Assemblaggio con chiave.

MAIN FEATURES

- Whole ratios.
- Torsion stiffness.
- Overload absorption capacity.
- Low inertia.
- Grease lubrication.
- Assembly with keynut.



PAM 63 B5
PAM 71 B5

PAM 71 B14
PAM 80 B14

Tipo / Type	Rapporti / Ratios	Coppia nominale / Rated torque	L	L1
PL 115 C	4 - 6	70 Nm	97	105
	16 - 24 - 36	160 Nm	122	130
	64 - 96 - 144 - 216	250 Nm	147	155



OPZIONI :

- Flange e alberi speciali

OPTIONS :

- Special shafts and flanges

R 25

Riduttore vite senza fine - Coppia da 5Nm a 8Nm

Worm gear - Torque from 5Nm to 8Nm

CARATTERISTICHE PRINCIPALI

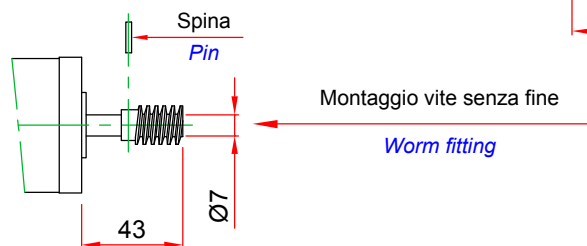
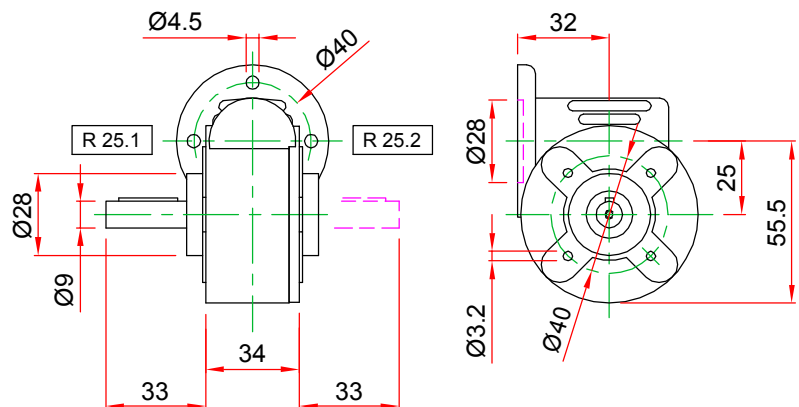
- Qualsiasi posizione di montaggio
- Vite in acciaio trattato.
- Corona in bronzo speciale.
- Cassa in alluminio ad alta resistenza.
- Lubrificazione a grasso.
- Assemblaggio con spina.

MAIN FEATURES

- All mounting positions.
- Treat steel worm.
- Special bronze wheel.
- High strength aluminium casing.
- Grease lubrication.
- Assembly with pin.



Tipo Type	Rapporti Ratios	Coppia nominale Rated torque
R 25	10	8 Nm
	20	7 Nm
	30	6 Nm
	50	5 Nm



OPZIONI :

- Flangia in uscita
- R25.3 : Albero in uscita bisporgente
- Montaggio a piedi

OPTIONS :

- Output flange
- R25.3 : Double-end output shaft
- Feet mounting

BW 30

Riduttore vite senza fine - Coppia da 12Nm a 21Nm

Worm gear - Torque from 12Nm to 21Nm

CARATTERISTICHE PRINCIPALI

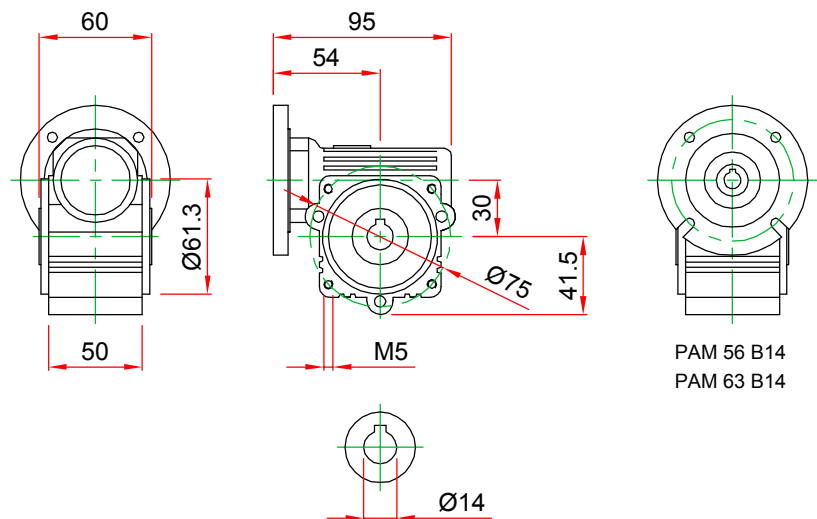
- Qualsiasi posizione di montaggio
- Vite in acciaio trattato.
- Corona in bronzo speciale.
- Cassa in alluminio ad alta resistenza.
- Lubrificazione a grasso.
- Assemblaggio con chiavetta.

MAIN FEATURES

- All mounting positions.
- Treat steel worm.
- Special bronze wheel.
- High strength aluminium casing.
- Grease lubrication.
- Assembly with keynut.



Tipo Type	Rapporti Ratios	Coppia nominale Rated torque
BW 30	7	19 Nm
	10	20 Nm
	15 - 20 - 25	21 Nm
	30	17 Nm
	40	16 Nm
	50	14 Nm
	60	16 Nm
	70	12 Nm
	80	13 Nm
	100	12 Nm



PAM 56 B14
PAM 63 B14



OPZIONI :

- Flangia in uscita
- Albero in uscita mono o bisporgente
- Montaggio a piedi

OPTIONS :

- Output flange
- Single or double-end output shaft
- Feet mounting

BW 40

Riduttore vite senza fine - Coppia da 32Nm a 58Nm

Worm gear - Torque from 32Nm to 58Nm

CARATTERISTICHE PRINCIPALI

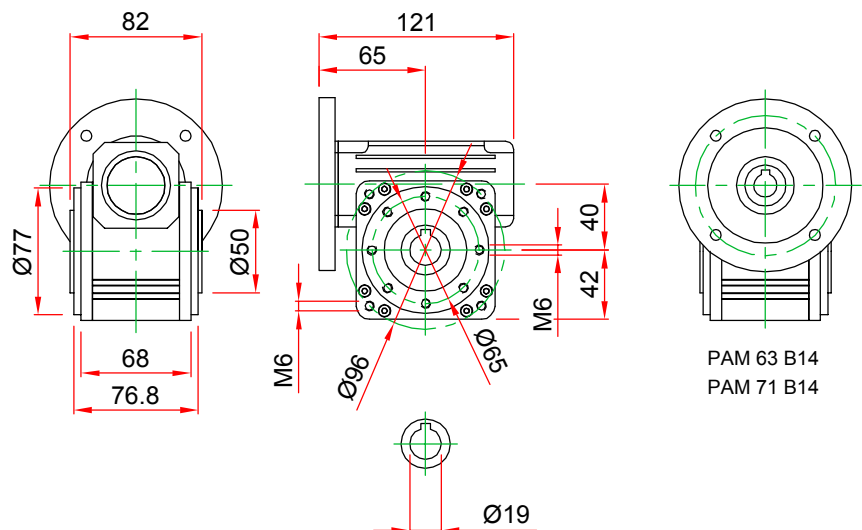
- Qualsiasi posizione di montaggio
- Vite in acciaio trattato.
- Corona in bronzo speciale.
- Cassa in alluminio ad alta resistenza.
- Lubrificazione a grasso.
- Assemblaggio con chiavetta.

MAIN FEATURES

- All mounting positions.
- Treat steel worm.
- Special bronze wheel.
- High strength aluminium casing.
- Grease lubrication.
- Assembly with keynut.



Tipo Type	Rapporti Ratios	Coppia nominale Rated torque
BW 40	7	46 Nm
	10 - 15	52 Nm
	20	47 Nm
	25 - 30	58 Nm
	40	50 Nm
	50	47 Nm
	60	39 Nm
	70	34 Nm
	80	33 Nm
	100	32 Nm



OPZIONI :

- Flangia in uscita
- Albero in uscita mono o bisporgente
- Montaggio a piedi

OPTIONS :

- Output flange
- Single or double-end output shaft
- Feet mounting

BW 50

Riduttore vite senza fine - Coppia da 51Nm a 96Nm

Worm gear - Torque from 51Nm to 96Nm

CARATTERISTICHE PRINCIPALI

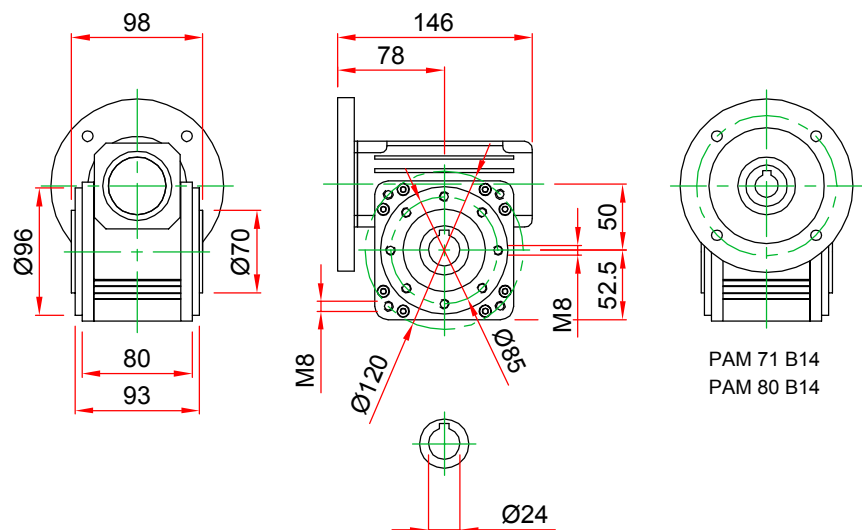
- Qualsiasi posizione di montaggio
- Vite in acciaio trattato.
- Corona in bronzo speciale.
- Cassa in alluminio ad alta resistenza.
- Lubrificazione a grasso.
- Assemblaggio con chiavetta.

MAIN FEATURES

- All mounting positions.
- Treat steel worm.
- Special bronze wheel.
- High strength aluminium casing.
- Grease lubrication.
- Assembly with keynut.



Tipo Type	Rapporti Ratios	Coppia nominale Rated torque
BW 50	7	67 Nm
	10	72 Nm
	15	76 Nm
	20	85 Nm
	25	96 Nm
	30	95 Nm
	40	88 Nm
	50	77 Nm
	60	71 Nm
	70	61 Nm
	80	59 Nm
	100	51 Nm



OPZIONI :

- Flangia in uscita
- Albero in uscita mono o bisporgente
- Montaggio a piedi

OPTIONS :

- Output flange
- Single or double-end output shaft
- Feet mounting

Generatori tachimetrici

Tachogenerators



DC 06/10/14/19

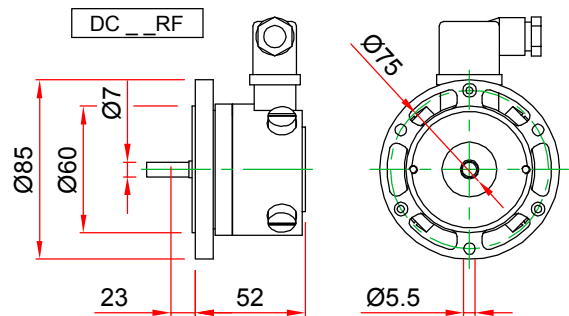
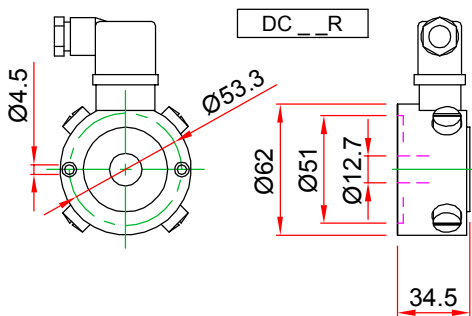
Dinamo tachimetriche D.C. tachogenerators

CARATTERISTICHE PRINCIPALI

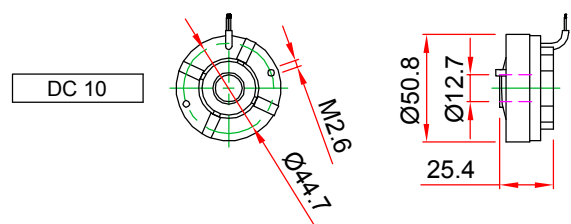
- Eccitazione a magneti permanenti Sm-Co.
- Spazzole in grafite/argento.
- Polarità dipendente dal senso di rotazione.
- Senso di rotazione reversibile.

MAIN FEATURES

- Sm-Co permanent magnet field.
- Silver-graphite brushes.
- Polarity depending on direction of rotation.
- Direction of rotation reversible.



Tipo / Type	Tensione a / Voltage at 1000min ⁻¹
DC06R - DC06RF	6V
DC10 - DC10R - DC10RF	10V
DC14R - DC14RF	14V
DC19R - DC19RF	20V



OPZIONI :

- Cavo
- Adattatori per alberi Ø8 e Ø10
- Predisposizione encoder

OPTIONS :

- Cable
- Adapters for shafts Ø8 and Ø10
- Encoder pre-arrangement

DC 20/60

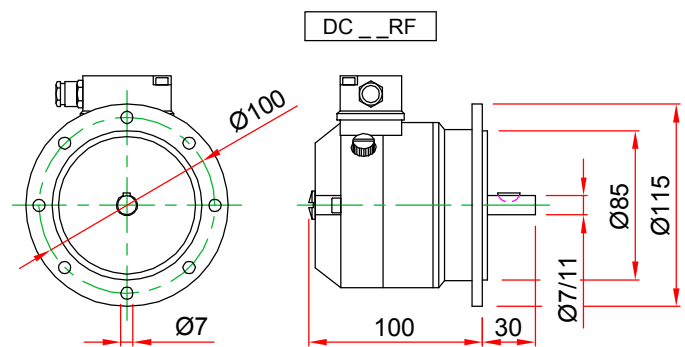
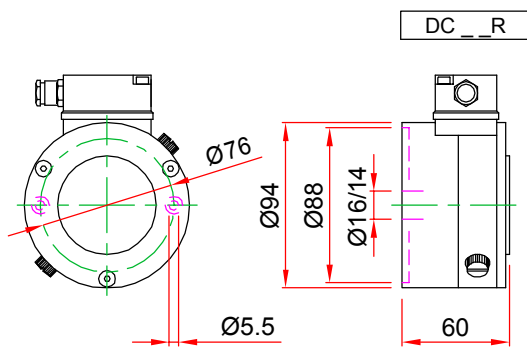
Dinamo tachimetriche D.C. tachogenerators

CARATTERISTICHE PRINCIPALI

- Eccitazione a magneti permanenti Alnico.
- Spazzole in grafite/argento.
- Polarità dipendente dal senso di rotazione.
- Senso di rotazione reversibile.

MAIN FEATURES

- Alnico permanent magnet field.
- Silver-graphite brushes.
- Polarity depending on direction of rotation.
- Direction of rotation reversible.



Tipo / Type	Tensione a / Voltage at 1000min ⁻¹
DC 20 R	20V
DC 60 R	60V

Tipo / Type	Tensione a / Voltage at 1000min ⁻¹
DC 20 RF	20V
DC 60 RF	60V



OPZIONI :

- Cavo
- Predisposizione encoder
- Altre tensioni

OPTIONS :

- Cable
- Encoder pre-arrangement
- Other voltages

AT 101/202

Alternatori tachimetrici

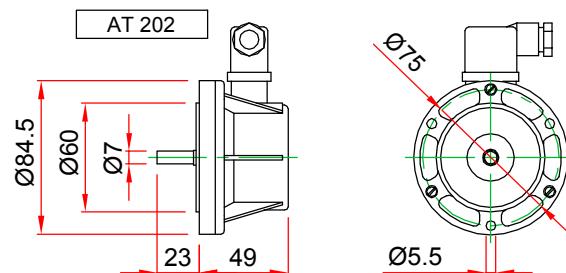
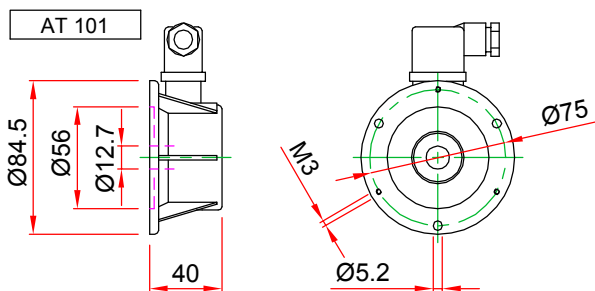
Three phase tachogenerators

CARATTERISTICHE PRINCIPALI

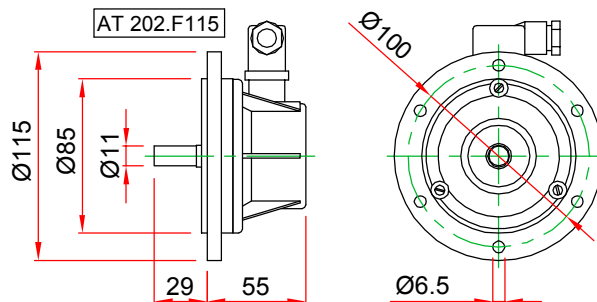
- Rotore a magneti permanenti Alnico 8 poli.
- Uscita in C.C. con raddrizzatore incorporato.
- Polarità indipendente dal senso di rotazione.
- Senso di rotazione reversibile.

MAIN FEATURES

- Alnico permanent magnet rotor 8 poles.
- D.C. output with embodied rectifier.
- Polarity not depending on direction of rotation.
- Direction of rotation reversible.



Tipo / Type	Tensione a / Voltage at 1000min ⁻¹
AT 101	24V
AT 202	24V
AT 202.F115	24V



OPZIONI :

- Adattatori per alberi Ø8 e Ø10 per AT 101

OPTIONS :

- Adapters for shafts Ø8 and Ø10 for AT 101

Encoder Incrementali

Incremental Encoders

EH30

- Basso costo - modulare - facile montaggio.
- Impulsi : fino a 1024 - canali ABZ.
- Alimentazione 5÷28V - elettronica NPN,PNP,OC,PP,LD.
- *Low cost - modular - easy to assemble.*
- *Pulses : until 1024 - ABZ channels.*
- *Supply 5÷28V - electronic NPN,PNP,OC,PP,LD.*



EH/EL 62/75

- Montaggio tramite giunto.
- Impulsi : EH=fino a 1068 EL=fino a 5000 - canali ABZ.
- Alimentazione 5÷28V - elettronica NPN,PNP,OC,PP,LD.
- *Assembly with joint.*
- *Pulses : EH=until 1068 EL=until 5000 - ABZ channels.*
- *Supply 5÷28V - electronic NPN,PNP,OC,PP,LD.*



E6CE

- Montaggio diretto - Albero cavo con cuscinetti
- Impulsi : fino a 1024 - canali ABZ.
- Alimentazione 5÷28V - elettronica NPN,PNP,OC,PP,LD.
- *Direct assembly - Hollow shaft with ball bearings.*
- *Pulses : until 1024 - ABZ channels.*
- *Supply 5÷28V - electronic NPN,PNP,OC,PP,LD.*



EL50

- Montaggio diretto - Albero cavo con cuscinetti
- Impulsi : fino a 2048 - canali ABZ.
- Alimentazione 5÷28V - elettronica NPN,PNP,OC,PP,LD.
- *Direct assembly - Hollow shaft with ball bearings.*
- *Pulses : until 2048 - ABZ channels.*
- *Supply 5÷28V - electronic NPN,PNP,OC,PP,LD.*



EF36K

- Montaggio diretto - Albero cavo con cuscinetti - Generazione ottica "Fasi effetto Hall"
- Impulsi : fino a 512 - canali ABZ / \overline{ABZ} .
- Alimentazione 5V - elettronica Line Driver.
- *Direct assembly - Hollow shaft with ball bearings - "Hall effect phases"optic generation*
- *Pulses : until 512 - ABZ/ \overline{ABZ} channels.*
- *Supply 5V - electronic Line Driver.*



EF49P

- Montaggio diretto - Albero cavo con cuscinetti - Generazione ottica "Fasi effetto Hall"
- Impulsi : fino a 2048 - canali ABZ / \overline{ABZ} .
- Alimentazione 5V - elettronica Line Driver.
- *Direct assembly - Hollow shaft with ball bearings - "Hall effect phases"optic generation*
- *Pulses : until 2048 - ABZ/ \overline{ABZ} channels.*
- *Supply 5V - electronic Line Driver.*

